



THUNDER
PRODUCTION | BROADCASTING | GAMING

SPECIFICATIONS STAGE 14

310.762.1360 • 20434 S. Santa Fe Ave. Long Beach, CA 90810

93'6"

COVE A
21'8"

GRID A
21'11"

CENTER BEAM
20'

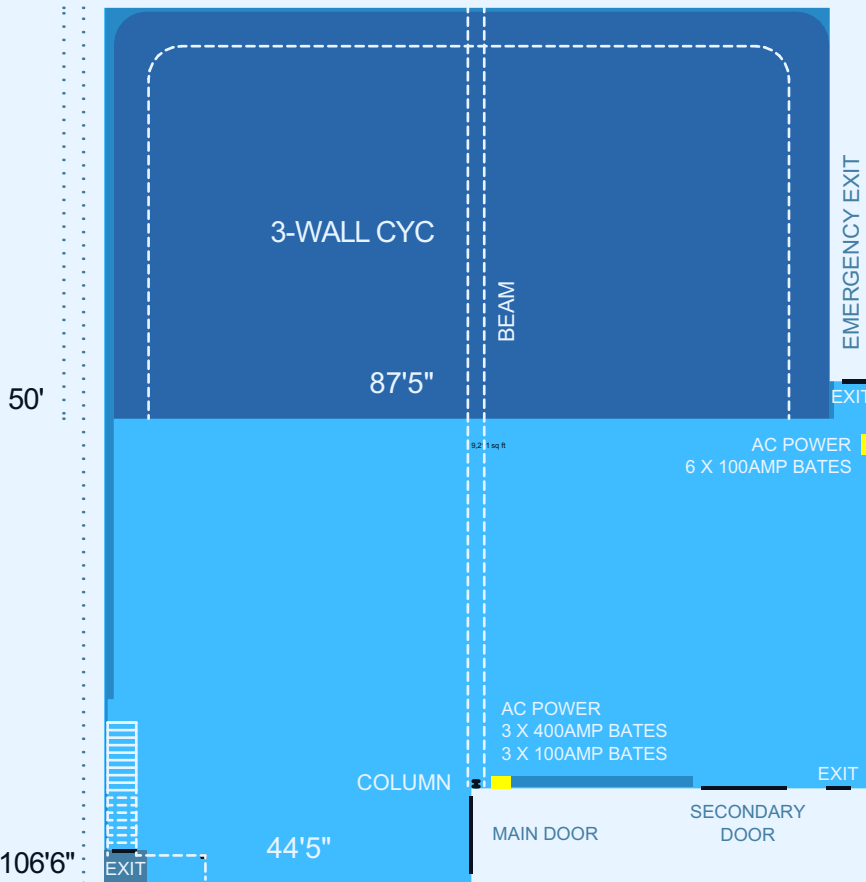
COVE B
20'8"

GRID B
22'11"

COVE C
20'

25'3"

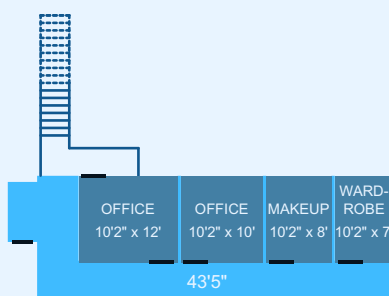
ELEVATION



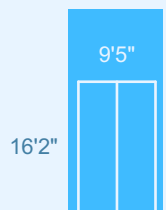
STAGE 14 FEATURES

- 9,200 SQF
- 94'W x 106'L x 25'H
- 3-Wall CYC
- Concrete Floors
- 2 (16'x40') Flying Flats
- Full Motion Gantry System
- Full Grid
- Soundproof
- Mezzanine Production Offices
- Wardrobe and Makeup Room
- In-Stage Office Suite
- Private Door Access Office Suite
- 40 Ton of A/C available
- Natural Gas line
- Interconnects with Stage 12
(via 10'x10' elephant doors)
- Cisco Meraki WiFi Access Points
- Dedicated Ethernet Access (up to 1 Gbps available** optimized for QTake + video conferencing)
- 1 Gbs Fiber-optic internet (scalable to 10 Gbps**)
- Private Fiber-optic network (optimized for video delivery. **Dedicated Ethernet link speeds from 750 Mbps-10 Gbps require 4 weeks lead time for provisioning and must be quoted separately)
- Accessible by Vehicle
- Access to Dock-High Loading
- Permitted for Filming

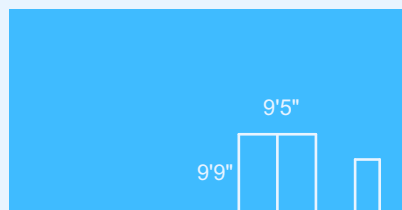
PLAN



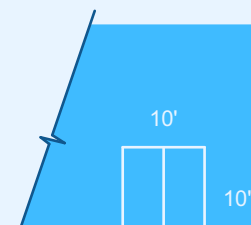
SECOND FLOOR



MAIN DOOR



SECONDARY DOOR



STAGE CONNECT DOOR

DOORS



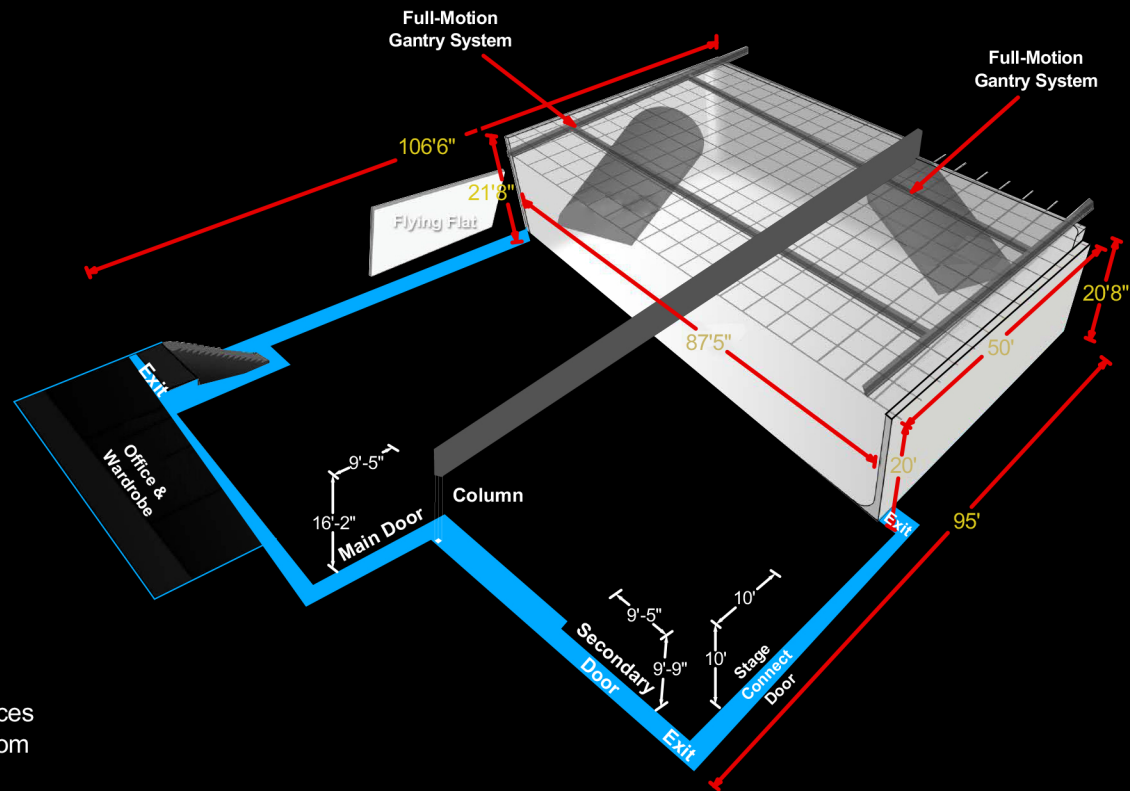
THUNDER
PRODUCTION | BROADCASTING | GAMING

SPECIFICATIONS
STAGE 14

310.762.1360 • 20434 S. Santa Fe Ave. Long Beach, CA 90810



310.762.1360 • 20434 S. Santa Fe Ave. Long Beach, CA 90810



Stage 14 Features:

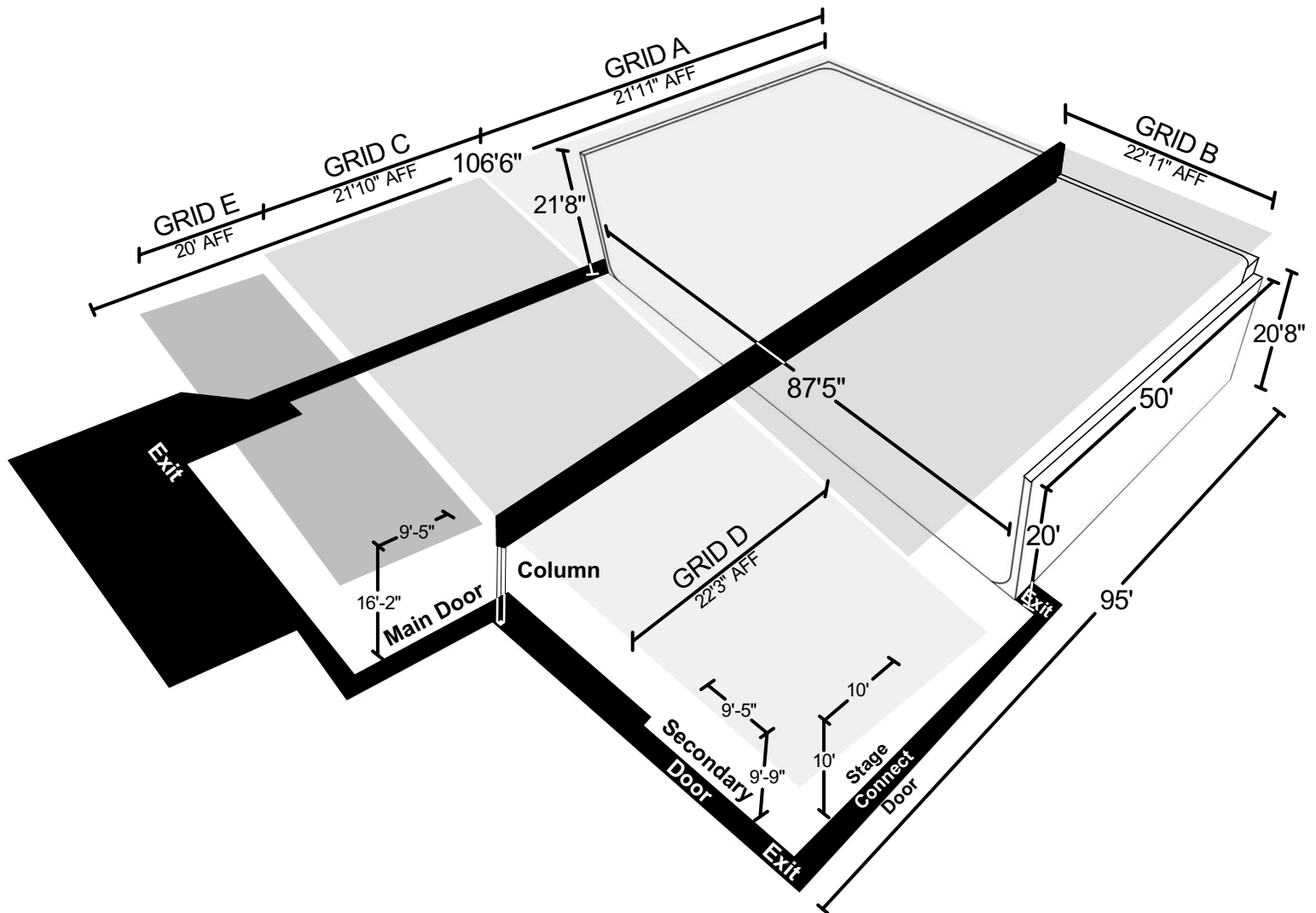
- 9,200 SQF
- 94'W x 106'L x 25'H
- 3-Wall CYC
- Concrete Floors
- 2 (16'x40') Flying Flats
- Full Motion Gantry System
- Full Grid
- Soundproof
- Mezzanine Production Offices
- Wardrobe and Makeup Room
- In-Stage Office Suite
- Private Door Access Office Suite
- 40 Ton of A/C available
- Natural Gas line
- Interconnects with Stage 12
(via 10'x10' elephant doors)
- Cisco Meraki WiFi Access Points
- Dedicated Ethernet Access (up to 1 Gbps available**
optimized for QTake + video conferencing)
- 1 Gbs Fiber-optic internet (scalable to 10 Gbps**)
- Private Fiber-optic network (optimized for video
delivery. **Dedicated Ethernet link speeds from 750 Mbps-
10 Gbps require 4 weeks lead time for provisioning and
must be quoted separately)
- Accessible by Vehicle
- Access to Dock-High Loading
- Permitted for Filming



THUNDER
PRODUCTION | BROADCASTING | GAMING

SPECIFICATIONS
STAGE 14

310.762.1360 • 20434 S. Santa Fe Ave. Long Beach, CA 90810





THUNDER

PRODUCTION | BROADCASTING | GAMING

1.855.5.THUNDER
310.762.1360
WWW.THUNDERSTUDIOS.COM



NORTH GATE



MAIN
ENTRANCE

**STUDIO
PARKING**

NARRABEEN
SUITE

**STAGE
20**

100' X 65' X 20'
2 WALL CYC
GREENSCREEN

**STAGE
19**

135' X 48' X 20'
3 WALL CYC

LOBBY

RESTROOMS

CATERING
KITCHEN
& CAFE

BONDI

SYDNEY

OFFICE - 10'2" X 12'
OFFICE - 10'2" X 10'
MAKEUP - 10'2" X 8'
WARDROBE - 10'2" X 7'
(UPSTAIRS)

**STAGE
1**

120' X 60' X 19'
3 WALL CYC

BRONTE

STAGE
MGR

COOGEE

CRAFT
STATION

ZONE 5

(UPSTAIRS)
VAUCLUSE
+
CRONULLA

STAGE 2

140' X 50' X 20'
2 WALL CYC
LIGHTBOX
TURN TABLE

**STAGE
3**

160' X 100' X 25'
3 WALL CYC
GREENSCREEN
CURTAIN
LIGHTBOX

**STAGE
14**

110' X 100' X 25'
3 WALL CYC
LIGHTBOX

**STAGE
12**

100' X 50' X 25'
2 WALL CYC
LIGHTBOX

**STAGE
11**

100' X 50' X 25'
3 WALL CYC

**STAGE
THUNDER XR 10**

100' X 50' X 25'
2 WALL CYC

DRIVE-IN RAMP

**PRODUCTION
PARKING**



LOADING
DOCK

**STAGE
5**

UPSTAIRS [47 x 29]
[19 x 26]
20'h

STAGE 6

30' X 40' X 20'
BROADCAST
STAGE

ZONE 1

ZONE 2

TAMARAMA

STAFF ROOM
16 X 29 X 12

PRODUCTION
SUPPLIES
40' X 32' X 27'

THUNDER GAMING
E-SPORTS ARENA

ZONE 3

THUNDER
RENTALS

THUNDER RENTALS
& EXPENDABLES



SOUTH GATE
SECURITY CHECK

**ESPORTS
CENTER
ACCESS**

ZONE 4

LOADING
DOCK

BACKLOT



SANITARY STATION



ZONE 1



ZONE 2



ZONE 3



ZONE 4



ZONE 5